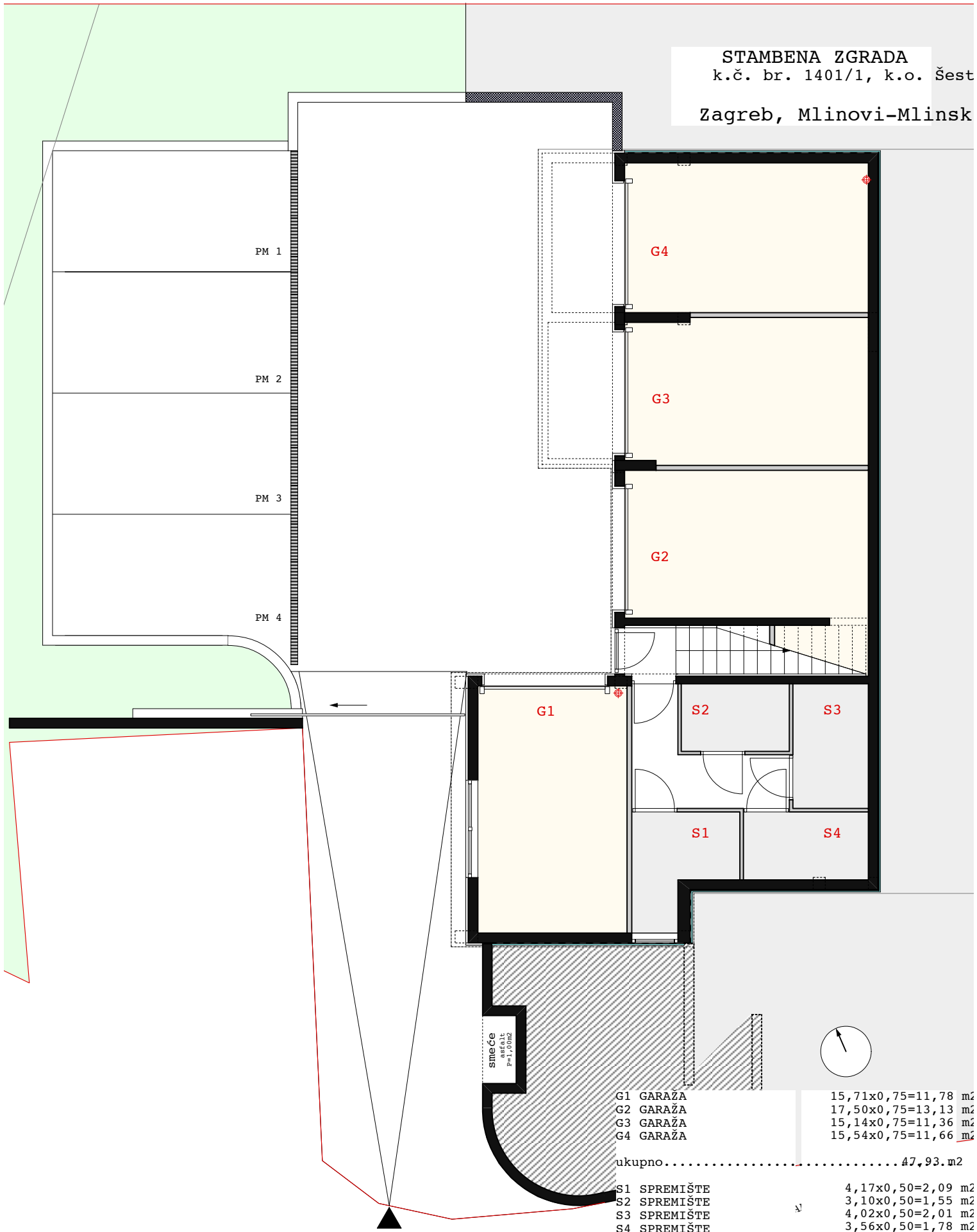


STAMBENA ZGRADA
 k.č. br. 1401/1, k.o. Šest
 Zagreb, Mlinovi-Mlinsk



G1 GARAŽA	15,71x0,75=11,78 m ²
G2 GARAŽA	17,50x0,75=13,13 m ²
G3 GARAŽA	15,14x0,75=11,36 m ²
G4 GARAŽA	15,54x0,75=11,66 m ²

ukupno..... 47,93.m²

S1 SPREMIŠTE	4,17x0,50=2,09 m ²
S2 SPREMIŠTE	3,10x0,50=1,55 m ²
S3 SPREMIŠTE	4,02x0,50=2,01 m ²
S4 SPREMIŠTE	3,56x0,50=1,78 m ²

ukupno..... 7,43.m²

P1 PARKIRALIŠTE	12,30x0,25=3,08
P2 PARKIRALIŠTE	12,30x0,25=3,08
P3 PARKIRALIŠTE	12,30x0,25=3,08
P4 PARKIRALIŠTE	12,30x0,25=3,08

ukupno..... 12,32.m²

kolni pristup

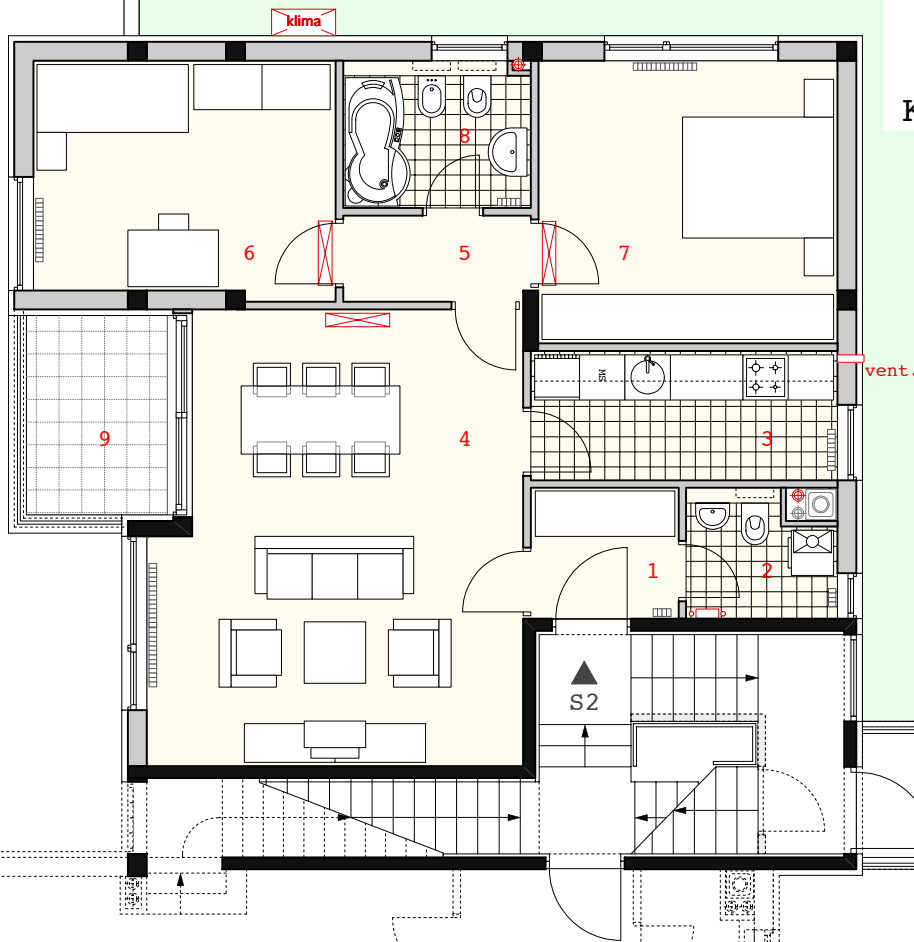
smeće
 asfalt
 P=1,00m²

STAMBENA ZGRADA
k.č. br. 1401/1, k.o. Šeš

Zagreb, Mlinovi-Mlins

KATALOG STANOVA

ulica MLINOVI



S2 trosobni stan

prizemlje

ulica MLINSKA - KALABAREVO VRELO

1 ULAZ	3.39 m ²
2 WC	3.08 m ²
3 KUHINJA	6.94 m ²
4 BORAVAK+BLAGOVAONA	28.28 m ²
5 DEGAŽMAN	2.81 m ²
6 SOBA	12.34 m ²
7 SOBA	14.81 m ²
8 KUPAONA	4.78 m ²

ukupno.....76.43 m².....

9 LOGGIA 4.91x0.75=3.68 m²

sveukupno.....80.11 m².....

stup